



Playwrite

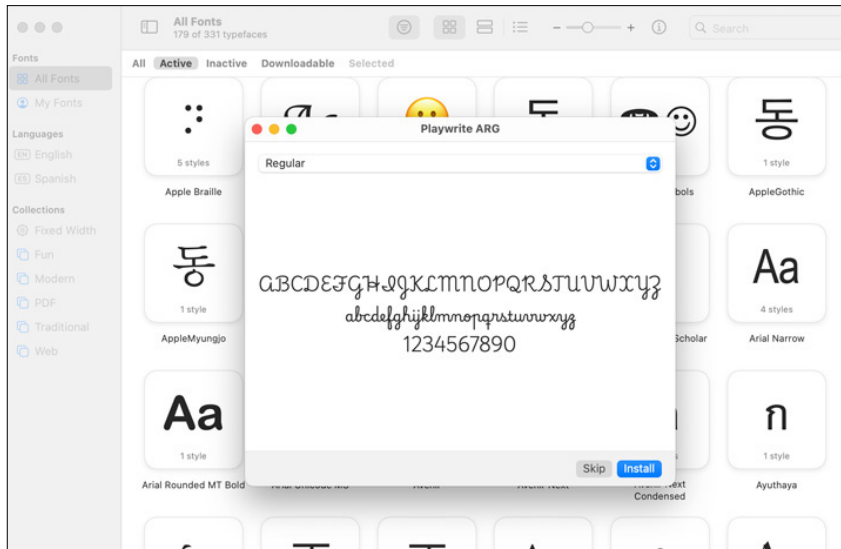
Installation and supported applications

The Playwrite school fonts are based on the findings of Primarium, a groundbreaking educational effort that documents the history and current practice of handwriting models taught to primary school students around the world. This typographic engine serves teachers, educators, and parents by generating free, localized OpenSource educational fonts. The Playwrite fonts are complemented by Playpen Sans, an informal and fun typeface designed for annotations, instructions, and student notes, and also includes emojis. For more information visit www.primarium.info



HOW TO INSTALL FONTS

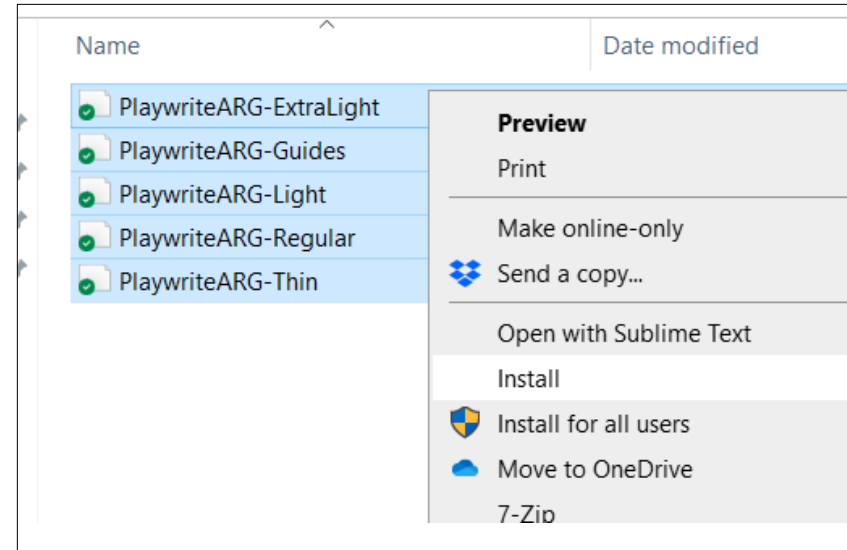
First, [download the font package](#) and expand the .Zip package.



On MacOS

Double-click the font file in the finder, then click install in the dialog that appears. For more details visit:

[Font Book Apple Support](#)



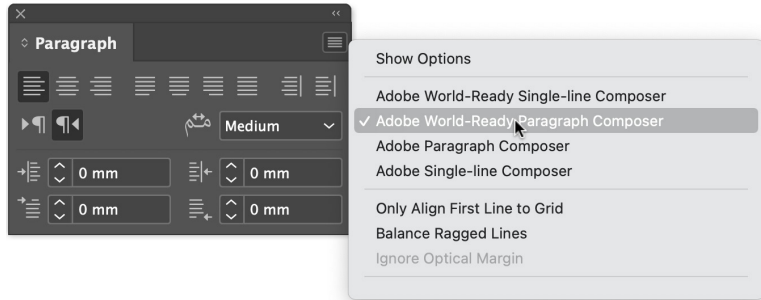
On Windows

Right-click the fonts you want, and click install. Follow the on-screen prompts to finish. For more details visit:

[Microsoft Add a Font](#)

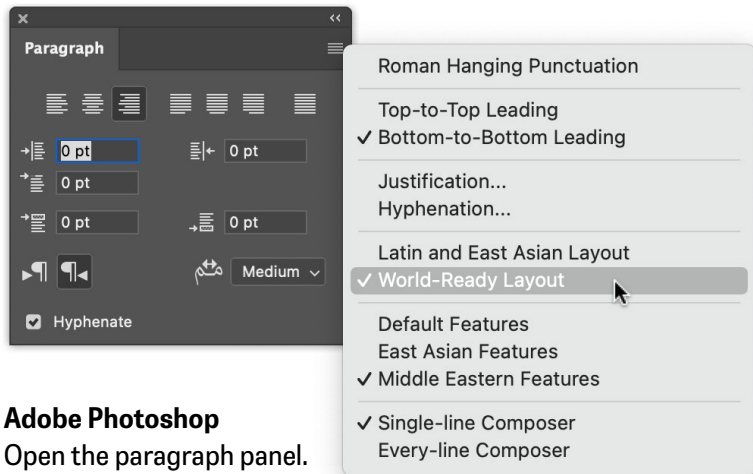
INSTRUCTIONS ON USING PLAYWRITE

The Playwrite font family uses complex opentype features to generate connected writing. Some common applications require these features to be manually activated.



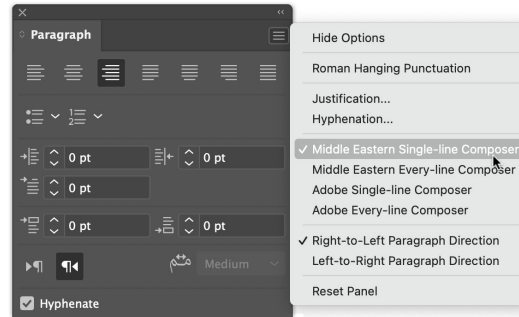
Adobe InDesign

Open the paragraph panel.
In the contextual menu, select Adobe World-ready Paragraph Composer.



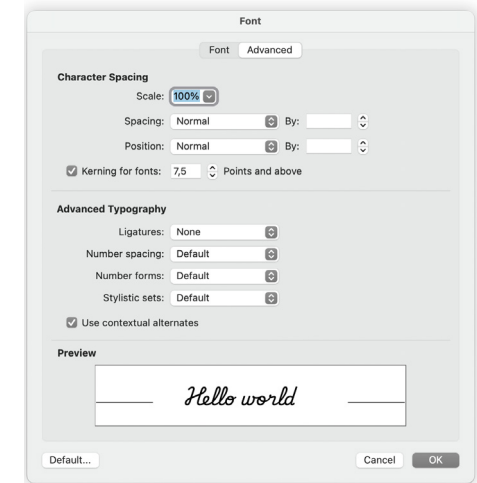
Adobe Photoshop

Open the paragraph panel.
In the contextual menu, select World-Ready Layout.



Adobe Illustrator

In Preferences > Type, check the Show Indic Options box. Close preferences and open the paragraph panel. In the contextual menu select Middle Eastern Composer.

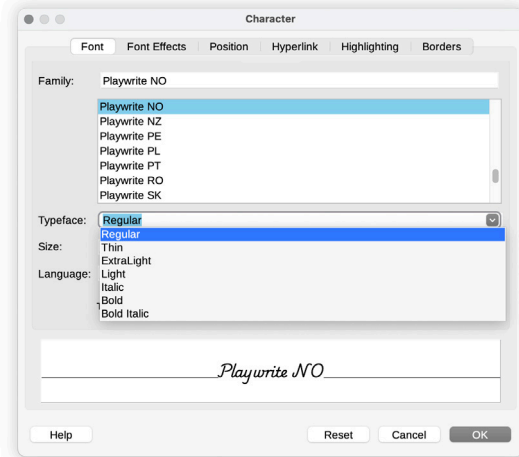


Microsoft Word

In the Menu bar go to Format, select Font, and select the Advanced tab. Then activate Contextual Alternates and Kerning for all text sizes.

Note

The Playwrite fonts don't include Bold or Italic styles, so please avoid applying them in text editors. If you use the common 'B' and 'I' buttons, you will automatically generate low-quality styles.



LibreOffice

To select different styles, go to Format in the menu bar, select Character, and use the Typeface menu.

CREDITS

Lead designers and concept

Veronika Burian
José Scaglione

Type designers

Yorlmar Campos
Tom Grace
Martín Sesto

Engineering

Joancarles Casasín

Graphic design

Elena Vaguillas
Rabab Charafeddine
Felicia Priscillya

Copywriting

Joshua Farmer
Doug Arellanes

Technical advisor

Kamal Masour

Page 5 illustrations

Pch.vector / Freepik



ABOUT PLAYWRITE

Playwrite is a typeface engine that allows the creation of primary school fonts. The font families are the practical result of the Primarium research project which studies handwriting instruction methodologies around the world. Its findings informed the design of the Playwrite glyphs, with regards to the calligraphic models currently in use, their development, and rationale.

The shapes within the handwritten Latin alphabet have developed from various methodologies, trends, and colonial influences around the world. As a result, the very notion of what constitutes primary school cursive writing varies dramatically. It could be vertical or slanted, fully joined or semi-joined, upper-case letters can be ornate and decorative or simply borrowed from print styles, lower-case letters can be based on round or oval foundational shapes, and the proportion of the x-height compared to the ascender and descender length can differ.



ABOUT TYPETOGETHER

TypeTogether is one of the most internationally-awarded independent font foundries of the last two decades. We are committed to excellence in type design with a focus on editorial use, creating custom type design for corporate use, and contributing to education in myriad ways.

Through our unique, diverse, curated font platform, TypeTogether creates innovative and stylish solutions to the greatest problems in the professional typography market worldwide. Our catalogue – honoured for its high quality, usefulness, personality, and ability to grab attention – already spans many scripts and languages and is diligently expanding each year.

